

timba

FLOORS & BOARDS

5G Engineered Oak
Fitting Instructions

www.timbafloor.com

Installation Instructions

14mm 5G Engineered Flooring

1. Introduction:

Congratulations on the purchase of your new Timba 5G LOC European Engineered Flooring. This product requires a 48 hour period of acclimatisation; stored flat and remaining in the sealed packaging until the date of installation. It is your responsibility to ensure that your site conditions are within the stated requirements.

This floor should only be used in dry rooms with normal temperature and air humidity. It should also be installed as a floating floor on a level and solid wooden or concrete subfloor. Any old carpets or PVC should be removed. Please ensure that any concrete subfloor is dry enough before you begin the installation. Use a moisture meter to check that the moisture content of the subfloor is less than 2%. When this product is installed with an Underfloor Heating system, be aware that the moisture conditions are much stricter for this type of installation - 1.8% for Concrete and 0.5% for Anhydrite. We always advise that you contact your Underfloor Heating supplier/installer for more details before installation.

2. Product Grading

To establish product consistency; a grading and manufacturing tolerance of 5% has been set to allow for the de-selection of material if deemed by the customer/installer to be unsuitable for the installation. A 5% cutting or waste allowance must, therefore, be taken into consideration and added onto the net square meterage required for the site. We recommend keeping any spare boards for any subsequent repairs in years to come. Due to the quality of our 5G LOC system full plank replacement is possible to do.

Note: Keep a record of all your moisture readings for later reference. These measurements will be required by the manufacturer or supplier if there are any future problems or warranty claims.

3. General Installation Information

3A) Preparation - Tools needed:

Distance wedges, hand block, installation support wedge, hand saw or electric jig-saw, pencil, measuring tape, drill, chisel + hammer, dustpan and brush.

3B) Check your Subfloor:

Carpets must be removed. You can install our engineered flooring on all kinds of subfloors if they are dry, flat, fixed and clean, for example on old wood floors (install at right angles to existing floor), cement/concrete floors or ceramic tiles. If the subfloor is of other material, please contact your distributor, who will be happy to advise you. The sub floor must

be dry: Always measure the moisture content of cement screed / concrete / anhydrite with professional test instruments and record readings. Cement screed / Concrete needs a long time to dry - in worst cases up to one year. For concrete sub floors: max 2% moisture content

Note: All types of cement screed/concrete/tiles sub floors require an ageing resistant moisture inhibitor – such as resistant PE - plastic film, min. 0,20 mm thick. (sd - value - 100microns) with overlapping joints that are a minimum 15 cm under skirting board and taped joints overlapping 300 mm underneath planks. Our wood floors are dried to a moisture content of 8% +/- 2%. Please measure and record moisture content at time of installation.

Note: Subfloor construction boards, for example particle board/plywood at time of installation may have too high moisture content (maximum acceptable is 14%). Measure and record all readings. Dry, if necessary or replace with boards of correct moisture content. In **ALL** cases using plywood / particle board an expansion gap of 3 mm should be left **ALL** round **EVERY** board.

Flat:

Measure always with a straight edge. Unevenness of + 2 mm over 2M is unacceptable and should be levelled.

Tip: Use a suitable flooring compound to level your sub floor – never use foams or other soft materials. Always check the floor afterwards for evenness.

Firm and Clean:

Concrete should always be firm and sound. If crumbly, cracked or soft, then remedial work is required, prior to installation of your Timba flooring. Always check old wooden sub floor nail/screw fixings are sound to eliminate the possibility of unevenness or squeaking. Brush or vacuum clean your sub floor prior to installing – work clean!

3C) Underlay

This type of Engineered Flooring, when installed using a floating installation, must be installed over a minimum of 2mm foam or poly underlay (with a density of a minimum of 180kg/m³). If an acoustic underlay has been installed first, and is suitable according to manufacturers guidelines for the flooring to be laid directly on top, then a 2mm foam or poly-type underlay is NOT necessary.

However, if a 1.5mm cork or bitumen type acoustic barrier is used, then 2mm foam, in particular, is still recommended to install over the subfloor. The foam also stops grinding

Installation Instructions

14mm 5G Engineered Flooring

between wood, OSB or plywood sub-floors and should be used. Moisture inhibitors (such as 1000g Polythene) will only assist in protecting the floor from residual moisture when the concrete subfloor is 2% or less. An underlay or moisture inhibitor will NOT cover up an inherent moisture problem that should have been addressed before installation of your engineered wood floor.

Sound insulation material must be installed (over the PE-plastic film, if so required). Use flooring paper, 2mm cork, HD-foams (over 30 kg/m³) 2-3 mm or other approved Underlay materials. Always check with your supplier for suitable product selection.

3D) Underfloor Heating

When installing over Underfloor Heating, we recommend the following guidelines should be followed;

- Maximum allowed temperature on top of the floor underneath the floorboards is 29 °C. Please note, it is not allowed to cover this wooden floor with carpets or rugs if installed over a floor heating system.
- Always follow the heating regulation recommendations given by the underfloor heating system supplier.

5A. Installation Method using Valinge 5G Technology

Install the first row as shown in diagrams below, 2nd and following rows as per method 2: First only connect board by board as in first row and then angle in the long side of the whole long row into the 1st row. Tip: Connect this second row on top of the first and then slowly slide the whole row towards you, till the groove falls in start position. Angle in by lifting and pushing forward the whole row and fine tune the panel positions with the positioning block as shown below (fig.6).

Others: Your floor can very easily be disassembled, which enables replacement during installation and also during use. See section 5B below. You can use the floor immediately after installation. The skirting's (mouldings) must be fixed to the walls (never to the floor).

Instructions for installing wood floorings with a locking system based on the Valinge 5G technology.

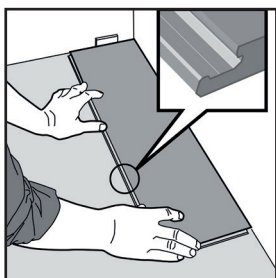


Fig 1.
First plank, first row. Start with a 10mm spacer to the left and position against the wall.

Later, after 3 rows, you can easily position the flooring against the front wall with distances = 10mm.

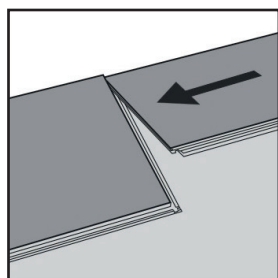


Fig 2.
Second plank, first row. Place this plank gently and tight to the short end of the first one.

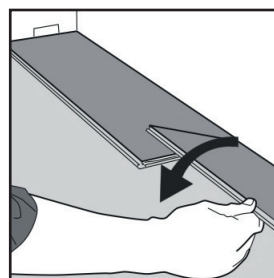


Fig 3.
Fold the panel down in a single action movement. During the fold down, make sure the panels are tight against each other.

Afterwards press or slightly knock the short end just installed.

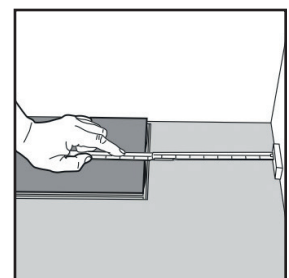


Fig 4.
At the end of the first row, put a distance = 10mm, to the wall and measure the length of the last plank to fit.

4. Installation Preparation

4A) General

Measure the area before installation and decide on the installation direction. It is recommended to install the board's end on to the primary source of light. The width of the last row of boards should not be less than 50mm. If so, adjust the width of the first board to compensate.

ALWAYS REMEMBER - MEASURE TWICE & CUT ONCE!

In narrow hallways/corridors, install the flooring lengthways following the direction of the longest wall.

Claims of visibly defective floorboards must be made before installation. Each board should be inspected to ensure that the quality is acceptable. No warranty claims relating to surface defects can be accepted after installation. If you lay it, you have accepted it.

Installation Instructions

14mm 5G Engineered Flooring

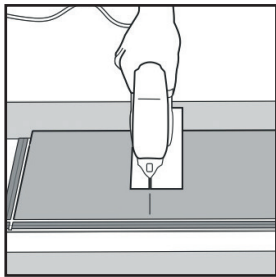


Fig 5.
Cut with a jigsaw - hardwood turned down or with a hand saw with the hardwood visible.

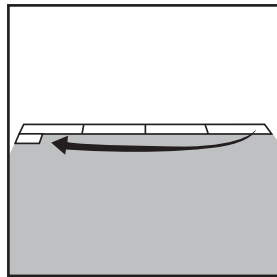


Fig 6.
Second row
First plank min length 500mm.

Put a distance of 10mm against the wall.

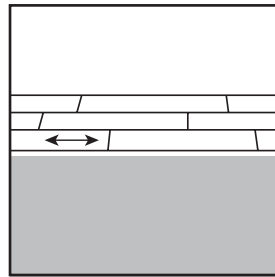


Fig 7.
General. Distance between short ends.

Minimum distance between short ends of planks in parallel rows shall not be less than circa 400mm

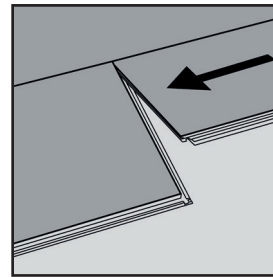


Fig 8a.
Second plank, second row
Place the panel gently and tight to the short end of the previous panel.

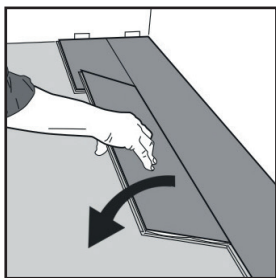


Fig 8b.
Fold the panel down in a single action movement with a slight press to the left to the short end of previous panel.

During the fold down, make sure the panels are tight together.

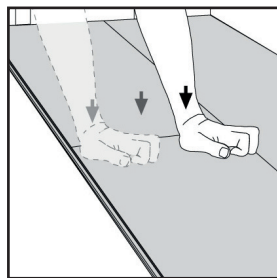


Fig 8c.
Press or knock slightly along the short end of the installed panel.

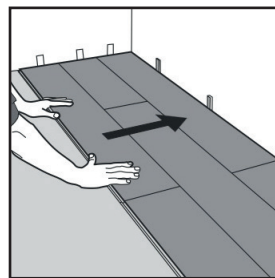


Fig 9.
After 2-3 rows.
Adjust the distance to the front wall by placing distances of 10mm.

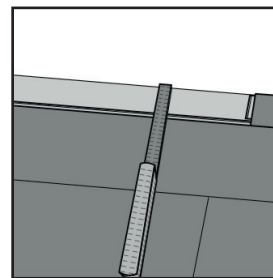


Fig 10.
Last row (and perhaps also first row)

Minimum width of 50mm.
Remember distance to wall circa 10mm.

5B. Disassembling (Without Tool)

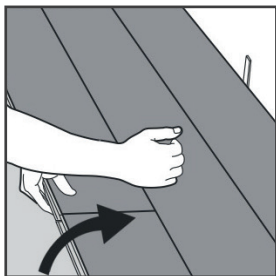


Fig 11.
Separate the whole row by carefully lifting up and slightly knocking just above the joint.

Fold up and release the whole long side.

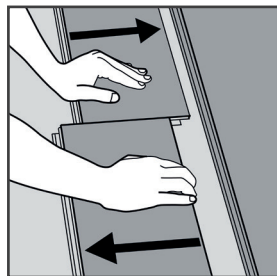


Fig 12.
Disassemble the panels by sliding horizontally.

DO NOT FOLD UP

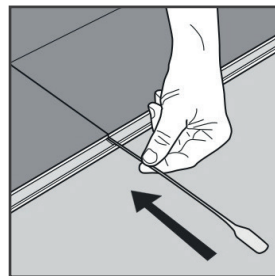


Fig 13.
Place a special Valinge Release Tool into the joint.

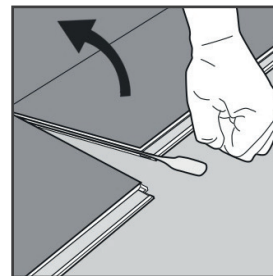


Fig 14.
Keep the left plank down to the floor and release the right plank - fold it up.

5C. Disassembling (With Tool)

Installation Instructions

14mm 5G Engineered Flooring

6. After the Installation

Once the installation is complete, the recommended relative humidity (RH) of 45-60 % and temperature of 18-24°C in the room should be maintained at all times. If necessary, install a humidifier/dehumidifier to ensure the best climate for yourself, your furniture and your wood floor. If the environment is not suitably maintained, or the floor is not correctly installed as per these instructions, the floor may show small gaps or some tension in the floor, which can be heard with footfall.

7. Cleaning and maintenance

The floor should be cleaned by using a vacuum cleaner using an attachment for wood floors or brushed using a soft-bristled brush. If required, wipe with a damp-dry (well squeezed) cloth with a mild soap. Any liquid accidentally spilt must be wiped off immediately to prevent staining.

8. Floor protection

It is recommended practice to use a good quality doormat at every entrance (both inside and out) to ensure dirt and dust particles aren't transferred onto the floor surface. For furniture, soft protective pads should be applied to table and chair legs to avoid any damage when moving furniture.

9. Warranty

Your Timba 5G LOC European Engineered Flooring warranty last for 15 years starting from the date of purchase. Please refer to our warranty section at www.timbafloor.com for more detailed information.

Tips for enjoying your Timba Floor:

- Always use a good quality underlay on top of a sub-floor; it gives a gentler feel underfoot and stops grinding.
- When cleaning the floor, use a vacuum cleaner, specialist swisher dry floor mop and well-wrung cloth.
- Remove stains with a suitable specialist wood floor cleaner.
- Use a good doormat to collect grit at every entrance (inside and outside) and clean them often.
- Use soft protective pads for your table and chair legs (do not use a hard adhesive, it will scratch your floor)
- Put a protective mat under chairs with wheels or replace wheels/casters with ones suitable for wood flooring.
- Clean up any liquid spillages quickly
- Be aware that sunlight can change the colour of your wood floor. It is a natural process.

MANUFACTURING TOLERANCE

ENGINEERED HARDWOOD FLOORS ARE A NATURAL PRODUCT AND AS SUCH ARE SUBJECT TO MANY VARIANCES IN COLOUR AND CHARACTER IN EACH INDIVIDUAL PIECE OF FLOORING, WE ALWAYS THEREFORE RECOMMEND YOU WORK FROM 3-4 PACKS OF FLOORING AT A TIME IN ORDER TO GET THE BEST NATURAL COLOUR MIX. AS SUCH A TOLERANCE OF 5% SHOULD BE ALLOWED FOR THE DESELECTION OF ANY MATERIAL DEEMED UNSUITABLE FOR INSTALLATION. THIS PRODUCT IS PRODUCED WITH A MANUFACTURING TOLERANCE OF + OR - 1.5% ON THE DIMENSION OF THE BOARD AND IN LINE WITH SPECIFIED TIMBER MANUFACTURING GUIDELINES, AS SUCH ANY ITEMS OUT OF TOLERANCE SHOULD BE DISMISSED AS PART OF THE 5% MANUFACTURING TOLERANCE

Tips for Correct Installation

You will find additional information on these points later in these instructions:

1. Ensure the flooring boxes are stored in the room where the floor is to be installed. Leave all boards in the sealed packaging for a period of 48 hours.
2. This floor is intended for floating installation only. Ensure a minimum of 10mm expansion gap be allowed for between the floor and all fixed points; such as walls, stairs, built-in-furniture and radiator pipes.
3. Check the condition of your subfloor - it must be completely dry (Always measure moisture readings), clean, firm and all previous floor coverings removed.
4. Choose a suitable underlay according to your own needs and requirements - All floors are unique!
5. Measure the room and decide on the installation direction.
6. If installing over an Underfloor Heating system, consult the system supplier for additional guidance on how to install correctly.
7. Always install according to our Installation Guidelines overleaf.
8. Check each piece of wood flooring before installation, discard any boards that show visible defects. If you lay it, you have accepted it!
9. Wood flooring and humans like the same climate, i.e. 45-60 % RH at 18-24 °C.
10. Maintain/clean your wood floor correctly, and you will enjoy the floor for many years to come.